



Room Name	Exam Room
Function Location	01.PC.01: Outpatient Physician Office Suite / Patient Care / Diagnostics and Treatment
Room Data Status	From DT.001
Last modified	1/16/2026 10:41 AM



Categorization

Room Number	1001
User Room Number	EX-001
Name on Drawing	EXAM

Areas

Programmed	120.00
Actual	120.00

General Requirements

FGI Reference

Version | 2022 Section 2.1-3.2.2 Single-Patient Exam or Treatment Room

Dimensions and Clearances

Room | Min. clear floor area (square feet) 120 Min. linear feet 10
Clearance 1 | Min. linear feet 3 Each side and foot of exam table

Space Requirements

1. | Room arrangement in which the exam table is placed at an angle or against a wall to accommodate the type of patient being served.

Occupancy

Design Occ. Load | 3 People
Max. Capacity | 4 People
Default Staff Count | 1 People
IBC Table 1004.5 Function | Institutional, Outpatient areas = 100 gross Max. Floor Area per Occupant

Proximity

Proximity to other functions | Near Patient Toilet and Documentation Alcove
Location requirements | Supervised

Functional Description

Patient Care | This exam room design provides the foundation for a basic caregiver-patient workflow with separate zones for patient interviews and exams, and the option for additional privacy with public/private zones.
Architectural Expression | Provide natural light and a design that reinforces privacy and calm for patients and their visitor.

Construction

Walls

STC Rating | 45 Min.
Wall mounted equipment | ☒ Light Instruments

Ceiling

Minimum Ceiling Height | 8'-6"

Room Features

- Exam light. See Section 2.1-8.3.4.2 (3) (Lighting for exam/treatment/trauma rooms) for requirements.
- Storage for supplies.
- Accommodations for written or electronic documentation
- Space for a visitor's chair
- Handwashing station that complies with Section 2.1-2.8.7.2 (Handwashing Station—Design requirements).



MEP

General Requirements

Additional Requirements | Relative Humidity 30-60%

Power

FGI Reference: | <https://shop.fgiguilines.org/library/2022/Hospital/3xy>
Min. Number of Single Receptacles | 8

HVAC Requirements

FGI Reference: | <https://shop.fgiguilines.org/library/2022/Hospital/2mo>
Room Pressure | Neutral

Sinks and Sink Controls

Type | Hand Wash
Controls | Wrist Blade

Medical Gas

Location 1

Med Gas Alarm

Additional Requirements

Mounting | Wall
Gas - Oxygen | 1
Gas - Vacuum | 1

Nurse Call System

General Requirements

FGI Reference: | <https://shop.fgiguilines.org/library/2022/Hospital/3xy>

Device Types

Patient Station | ☒

Technology

General Requirements

FGI Reference | 2.1-8.5.2 Telecommunications Systems
Data - Medical | Min. Number of Single Ports 1
Telephone | Min. Number of Single Ports 1
Television | Coax 1

Finishes

Finish Type	Quantity	Budget price	Change Status
Base			
Base, Ceramic Tile, Color A	1	35.00	ADDED
Base, 6" Rubber, Color A	1		DELETED
Ceiling			
ACT, 2x2	1	45.00	UNCHANGED
Floor			
Sheet, Rubber, Color A	1	27.00	UNCHANGED
Wall			
Paint, Accent, Color A	1	25.00	UNCHANGED
Paint, Color A	1	17.00	UNCHANGED
	6	Ex. TAX 149.00	



Equipment

Name	Mfr.	Model	Quantity	Budget price	Change Status
Chair, Examination/Procedure	Midmark-Ritter	225-002	1	6,500.00	UNCHANGED
Diagnostic Set, Wall Mounted	Welch Allyn	Green Series 777	1	800.00	UNCHANGED
Stimulator, Cardiac, Electrophysiology Lab			1	15,000.00	ADDED
<i>Stool, Exam</i>	<i>Midmark-Ritter</i>	<i>425-001</i>	<i>2</i>	<i>150.00</i>	<i>UPDATED</i>
Mobile Workstation			1	1,824.00	UNCHANGED
Dispenser, Glove, Triple Box			1	89.00	UNCHANGED
<i>Glove Box, Nitrile</i>			3	80.00	UNCHANGED
<i>Dispenser, Hand Sanitizer</i>			<i>2</i>	<i>65.00</i>	<i>UPDATED</i>
Dispenser, Hand Soap			1	55.00	UNCHANGED
Dispenser, Paper Towel			1	125.00	UNCHANGED
<i>Disposal, Sharps</i>			<i>2</i>	<i>180.00</i>	<i>UPDATED</i>
Waste Receptacle, Trash			1	100.00	ADDED
Waste Receptacle, Step-On			1		DELETED
			18	Ex. TAX 24,968.00	

Furniture

Name	Mfr.	Model	Quantity	Budget price	Change Status
<i>Chair, Side</i>			<i>2</i>	<i>300.00</i>	<i>UPDATED</i>
Chair, Side, Bariatric			1		DELETED
			3	Ex. TAX 300.00	

Systems

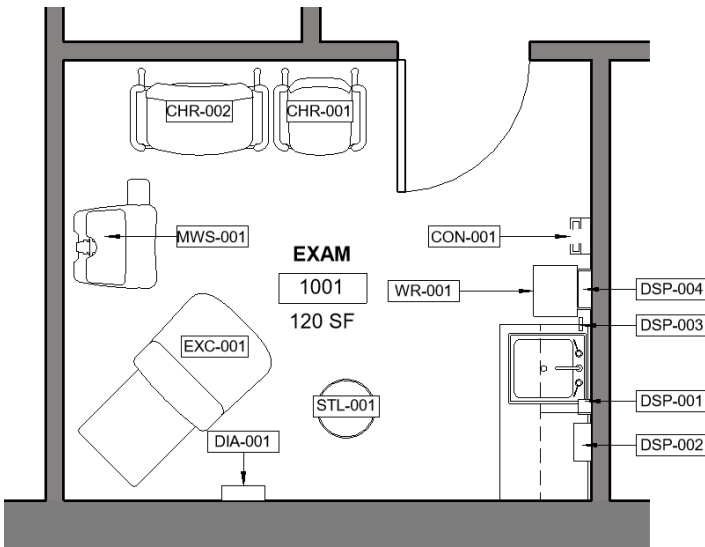
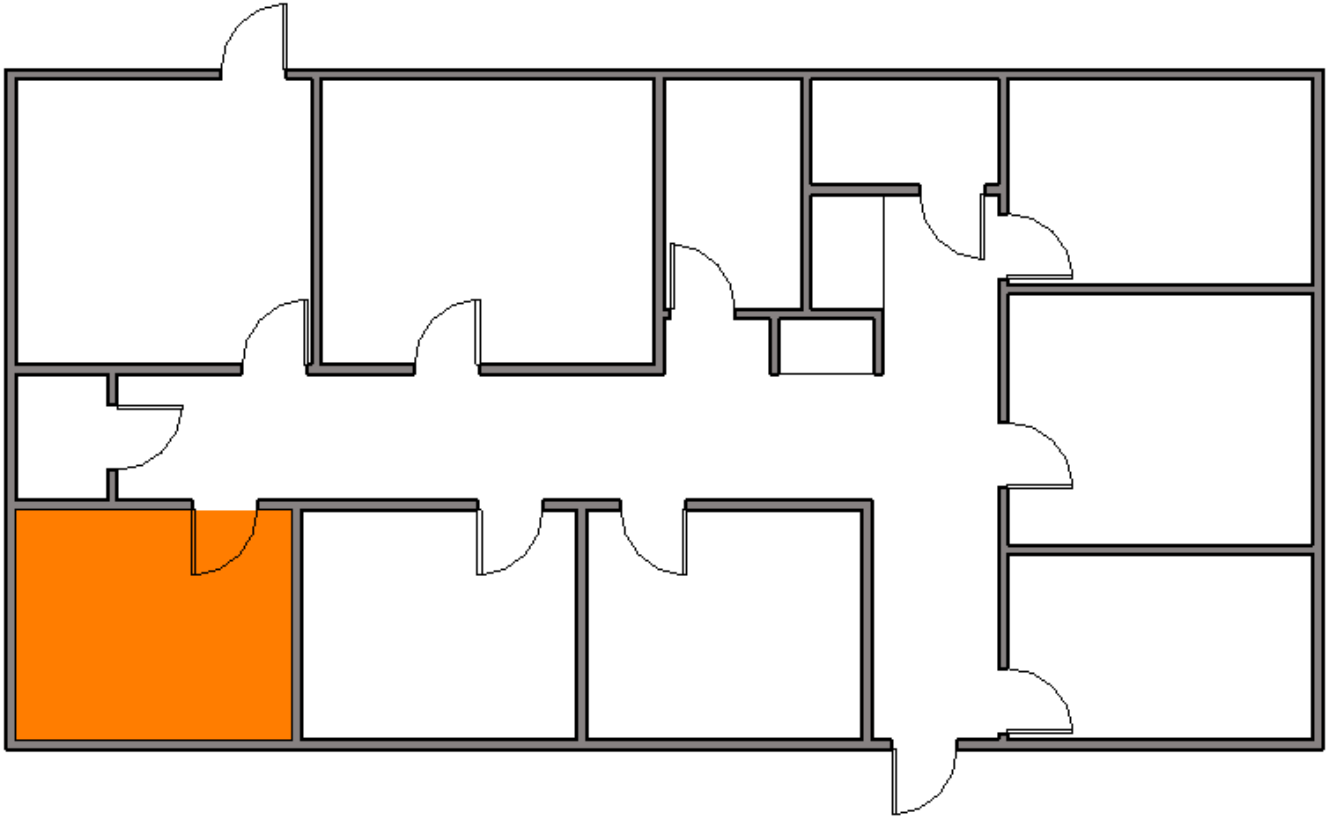
Discipline	Quantity	Budget price	Change Status
Electrical			
Light, Patient Exam, LED 24"x24"	1	3,500.00	ADDED
Light, General, LED 24"x24"	2		DELETED
Technology			
Computer, Mobile WKST Keyboard	1	67.00	UNCHANGED
Computer, Mobile WKST Laptop	1	850.00	UNCHANGED
Computer, Mobile WKST Monitor	1	280.00	UNCHANGED
Computer, Mobile WKST Mouse	1	25.00	UNCHANGED
Copier, Counter Top	1	3,500.00	ADDED
Telephone, Desk	1	200.00	ADDED
Television, HD	1	425.00	UNCHANGED
Mechanical			
Return Register, 12x12	1	55.00	UNCHANGED
Supply Diffuser, 24x24	1	85.00	UNCHANGED
Plumbing			
Sink, General, Basin	1	2,100.00	UNCHANGED
<i>Faucet, Gooseneck</i>	<i>1</i>	<i>411.00</i>	<i>UNCHANGED</i>
		14	Ex. TAX 11,498.00

Signage

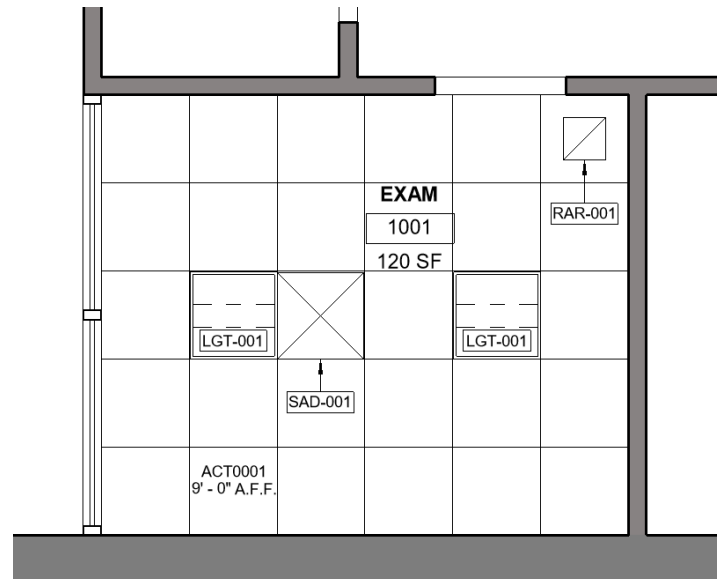


Room Function Number 01.PC.001

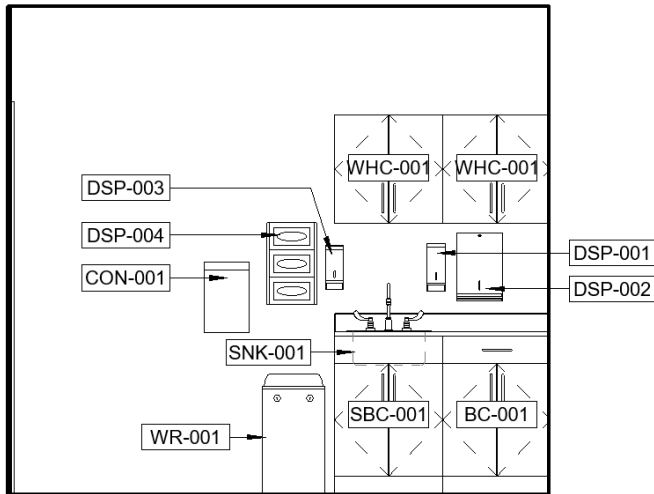
Name	Quantity	Budget price	Change Status
Sign - Wayfinding, Room	1	200.00	UNCHANGED
	1	Ex. TAX 200.00	



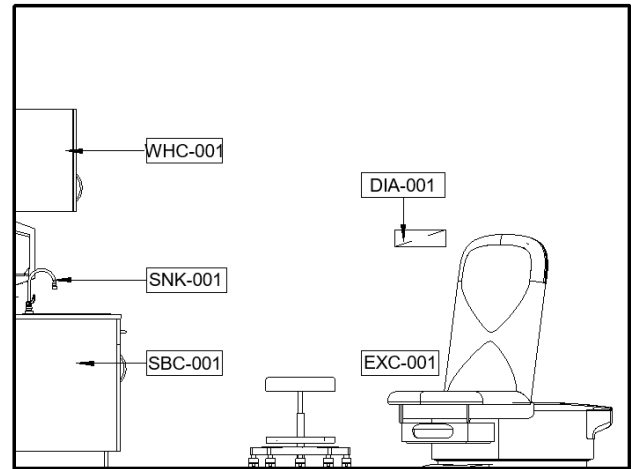
From Revit - Key Plan



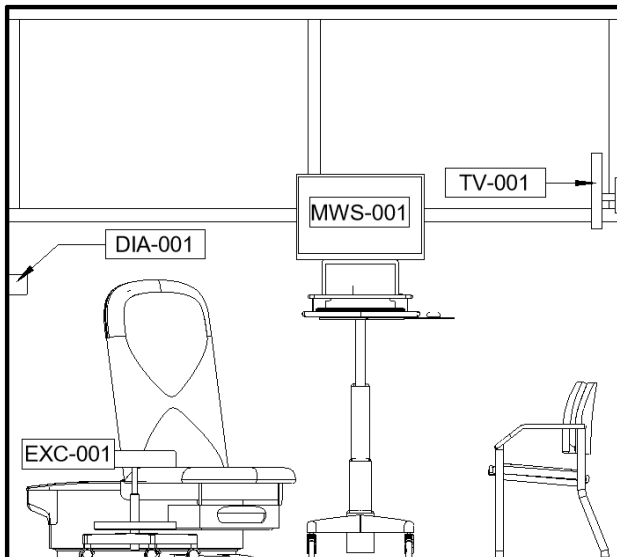
From Revit



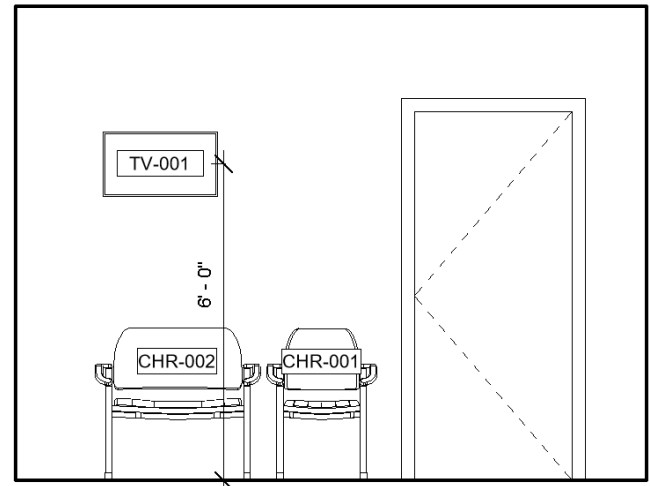
From Revit - Ceiling Detail



From Revit



From Revit



From Revit

